

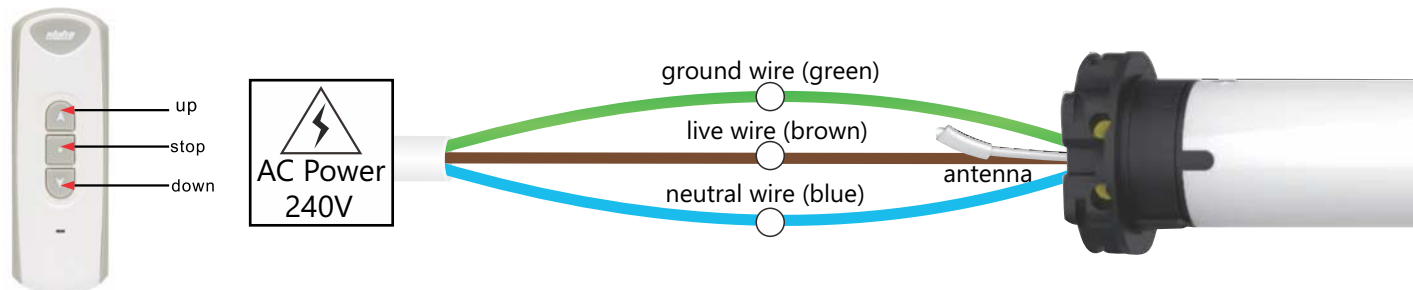
## 1. TECHNICAL SPECIFICATIONS

Power: AC 220V/50Hz

Protection Index: IP44

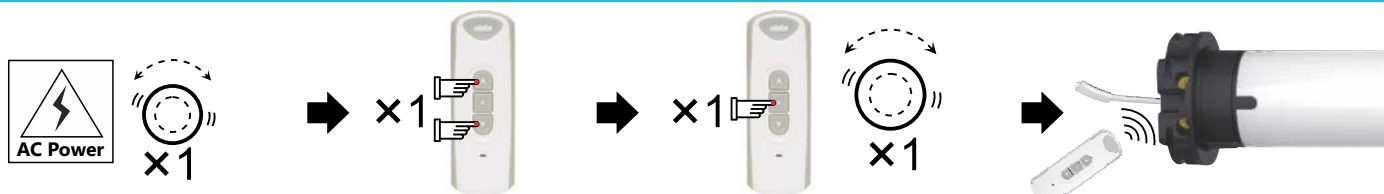
The motor can be compatible with 15 remotes at most.

## 2. WIRE CONNECTION



## 3. CODE LEARNING

Note: After code learning, you can use the remote to control the motor to run up, down and stop.



Power on, the motor will vibrate.

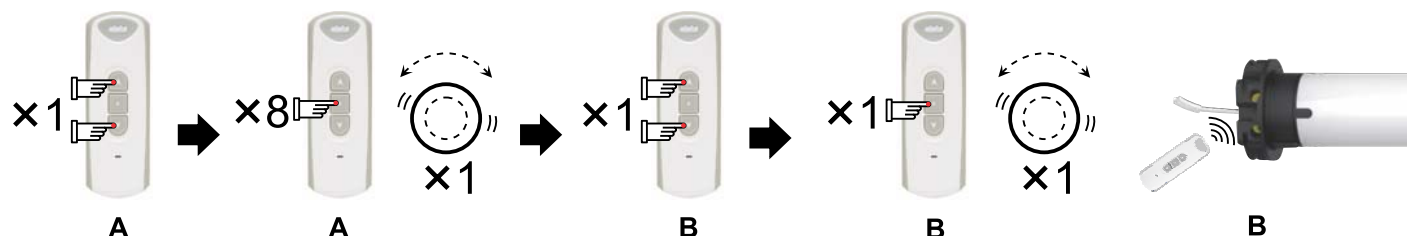
Press UP and DOWN buttons simultaneously.

Press remote's STOP button once within 10s, the motor will vibrate.

You can control the motor by the remote.

If you cannot assign a remote as above, please disconnect power to the motor for 3 seconds, then connect power to motor - motor will jiggle. Proceed to do this 3 times waiting 3 seconds between each disconnect and reconnect. After the third time of connecting the power, press UP & DOWN simultaneously on the remote and then press STOP once. The remote will then assign to the motor.

## 4. COPY



Press A remote UP and DOWN buttons simultaneously.

Press A remote STOP button 8 times within 10s, the motor will vibrate.

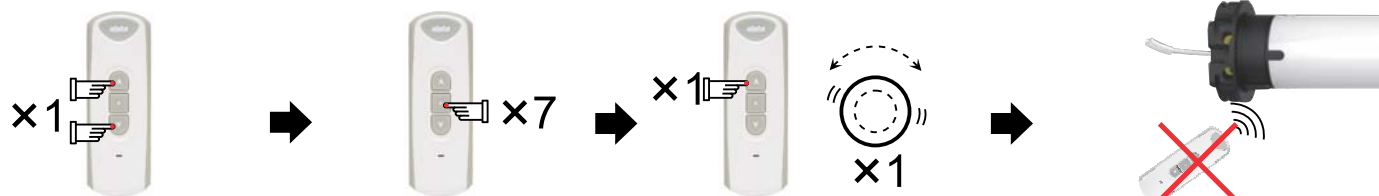
Press B remote UP and DOWN buttons simultaneously.

Press B remote STOP button once within 10s, the motor will vibrate.

You can control the motor by B remote.

## 5. CODE DELETING

### A. Delete the remote you are operating



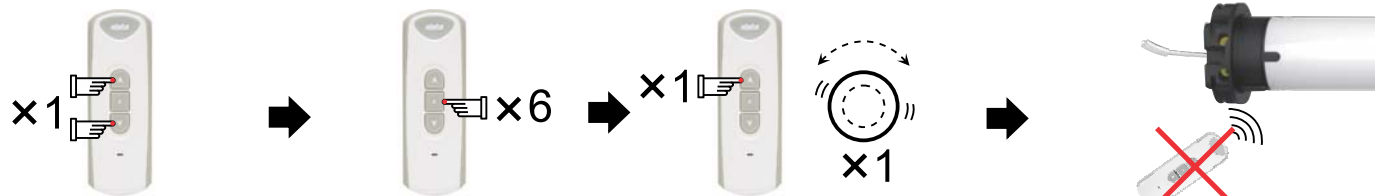
Press UP and DOWN buttons simultaneously.

Press A remote STOP button 7 times within 10s.

Press remote UP button once within 10s, the motor will vibrate.

The remote you are operating now won't control the motor again.

### B. Delete all the remotes



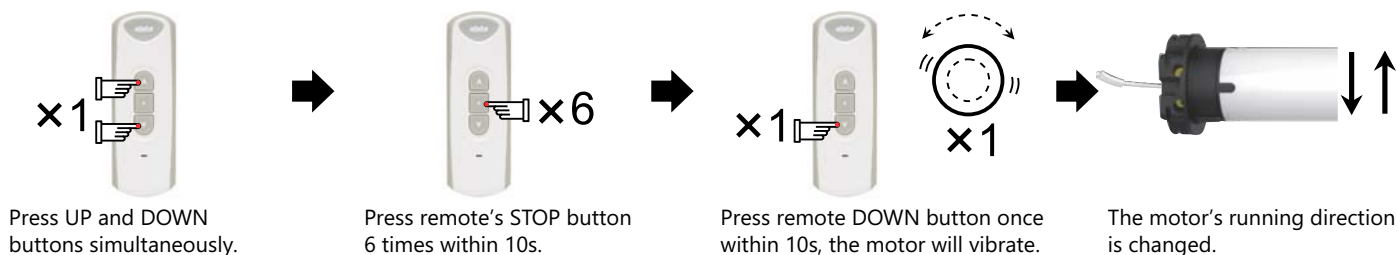
Press UP and DOWN buttons simultaneously

Press remote STOP button 6 times within 10s.

Press remote UP button once within 10s, the motor will vibrate.

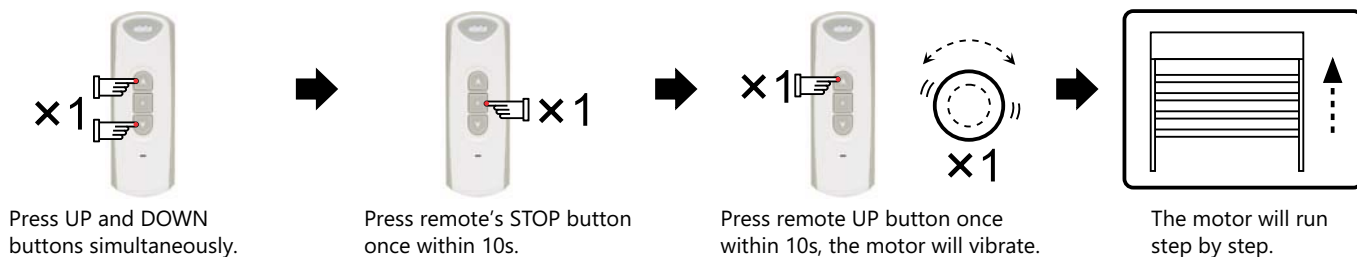
All the remote that have already learned the motor's code won't control the motor anymore.

## 6. DIRECTION CHANGE

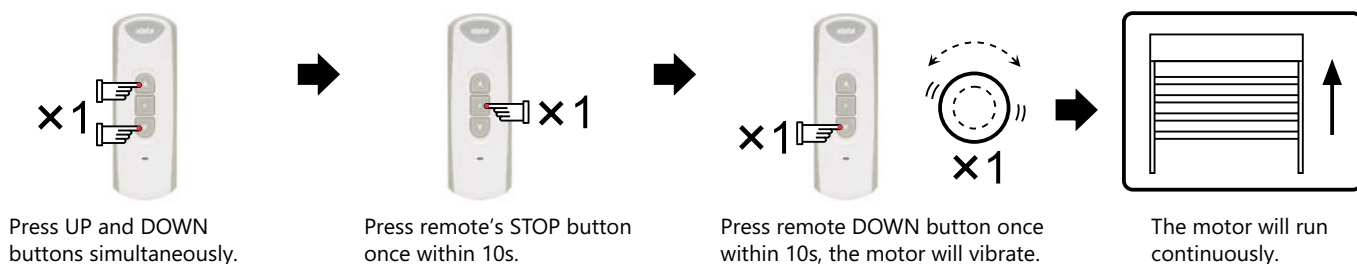


## 7. SET STEP BY STEP FUNCTION

If the motor is in vibration state, long press emitter's UP or DOWN button for 3 seconds, the motor will run continuously.



## 8. DELETE STEP BY STEP FUNCTION



## Announcement

Setting may fail due to the interference of signal. If in this case, please reset.

The receiver RE101 is taken as an example in this instruction. The receiver is compatible with several other rolling code remotes.

Please do not press buttons for too long in case life span of battery declines. Pressing time should be at 0.5s, interval time should be 1 second.

If the battery is in low power, please replace battery.

The control unit is of high voltage. Please do not place it in humid atmosphere.

Children should be supervised to ensure that they do not play with the appliance.

Ambient temperature: -10°C to +55°C

All products are as per material subjects if there is change in appearance, color, function etc.

The information is subject to changes without prior notice.